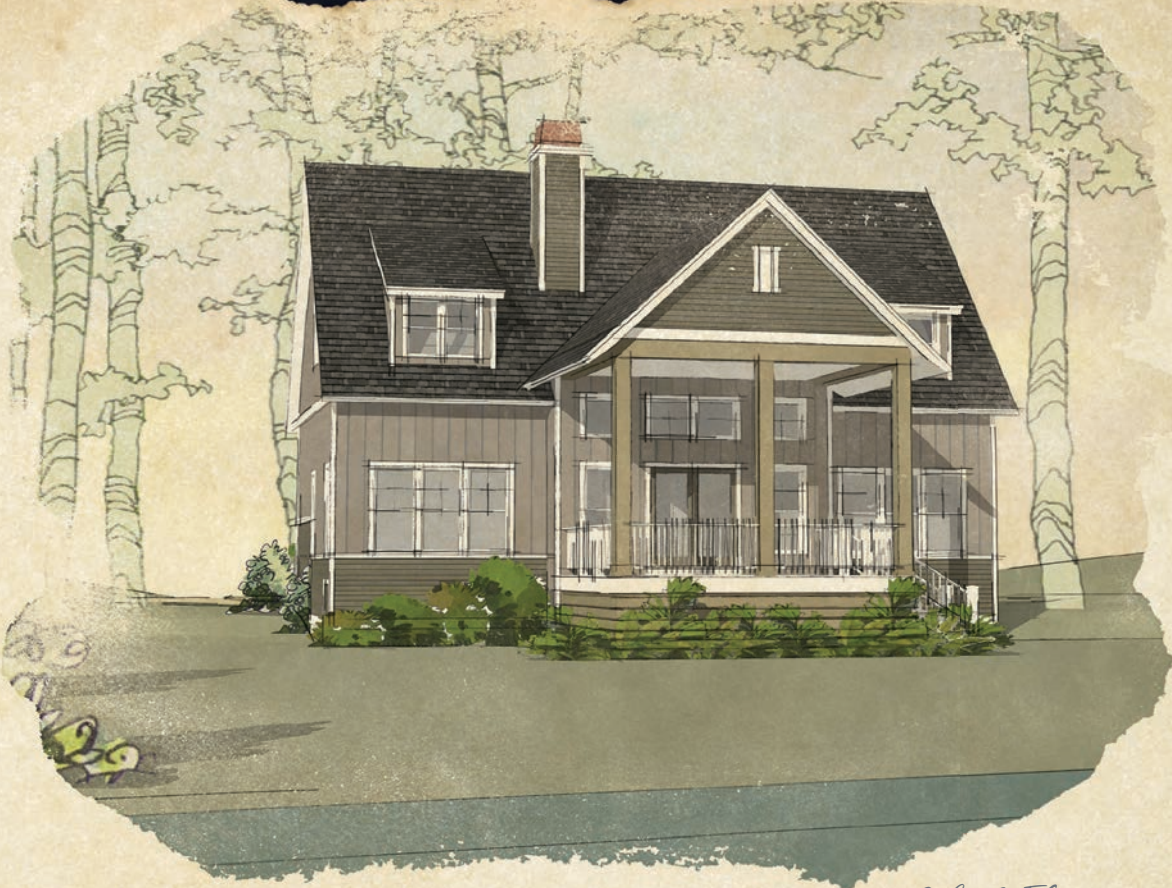


WHITE OAK

LANDING



Lakeside Elevation

The Tempest

DESIGNER: *Larry Furlong*

- Two story cottage
- Generous open concept with large living room, fireplace adjacent to dining room and kitchen
- Master suite on main level
- Two additional bedrooms and bunk area on upper level
- Large lakeside porch for enjoying the outdoors
- All bedrooms have a view of the lake
- Low maintenance landscape
- Seawall, pier and waterfront features included



Street Side Elevation

Total square feet - 1,983 without optional area | Conditioned sq. ft. - 1,732 without optional area
Optional Service area sq. ft. - 68 | WhiteOakLandingLM.com

WHITE
OAK
LANDING



Main Level



Terrace Level



WHITE OAK

LANDING



Lakeside Elevation

The Star

DESIGNER: O'Kelley Architecture

- One level cottage – with two options
- Option 1 - Three bedrooms and two full bathrooms
- Option 2 - 4 bedroom and 3 full bathrooms
- Open concept with large family room with fireplace adjacent to dining room and kitchen
- Oversized kitchen island provides for additional seating/entertaining
- Family room opens to lakeside porch
- Low maintenance landscape
- Seawall, pier and waterfront features included

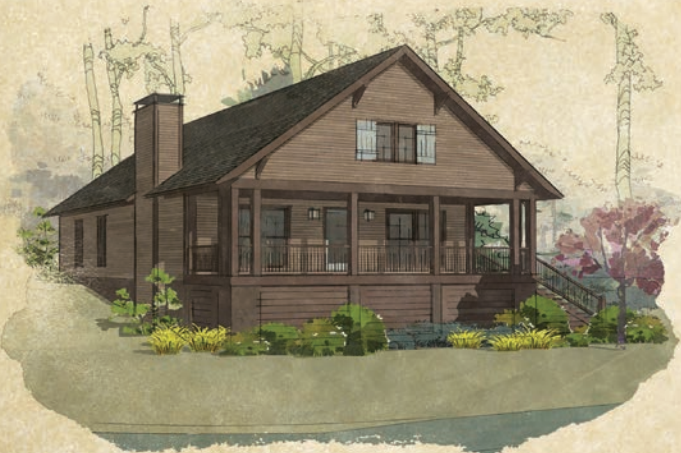


Street Side Elevation

3 bedroom Plan | Total square feet - 1,806 | Conditioned sq. ft. - 1,472

4 bedroom Plan | 2,261 | Conditioned sq. ft. - 1,789 | WhiteOakLandingLM.com

WHITE
OAK
LANDING



WHITE OAK

LANDING



Lakeside Elevation

The Sunfish

DESIGNER: *Mitch Ginn*

- Basement cottage
- 3 Bedrooms 3.5 baths
- Open concept design – Vaulted family room open to dining and kitchen which is ideal for entertaining or just enjoying lake views
- Large lakeside porch
- Master suite with vaulted ceiling on main level
- Two additional bedrooms with two full bathrooms and bunk room on Terrace Level
- Terrace level recreation room and summer kitchen make for additional entertaining and ease of access to lakeside activities
- All bedrooms enjoy a lake view
- Low maintenance landscape
- Seawall, pier and waterfront features included



Street Side Elevation

Total square feet - 2,281 | Conditioned sq. ft. - 1,855 | WhiteOakLandingLM.com

WHITE OAK

LANDING



Main Level

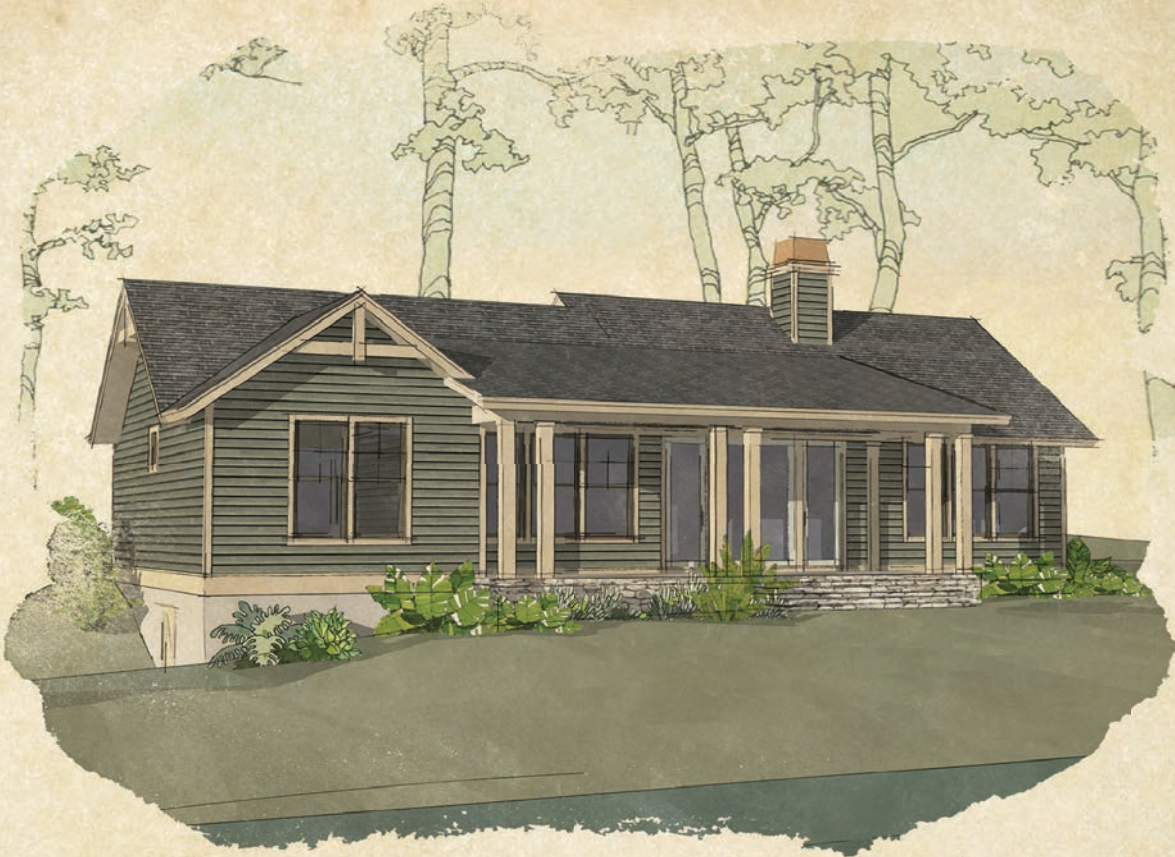


Terrace Level



WHITE OAK

LANDING



Lakeside Elevation

The Hobe

DESIGNER: *Mitch Ginn*

- Single level plan with two options
- Option 1 - 3 bedrooms and 2 full bathrooms
- Option 2- 4 bedrooms and 3 full bathroom
- Open family room and dining with vaulted ceiling open to kitchen
- Family room opens to large lakeside porch. Great space for entertaining or just relaxing
- Kitchen with island for additional seating/entertaining
- Low maintenance landscape
- Seawall, pier and waterfront features included

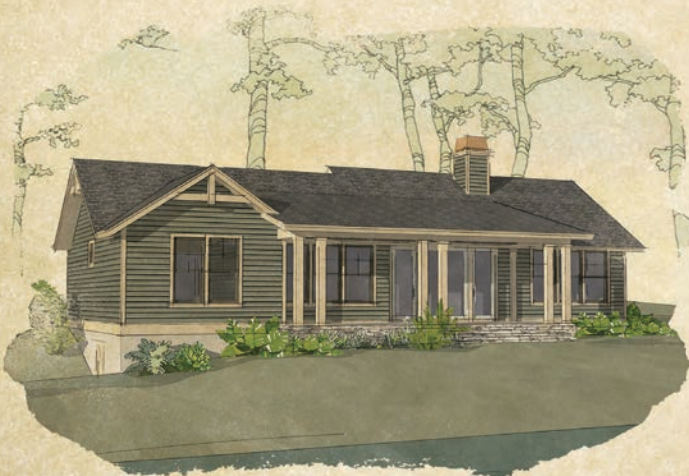
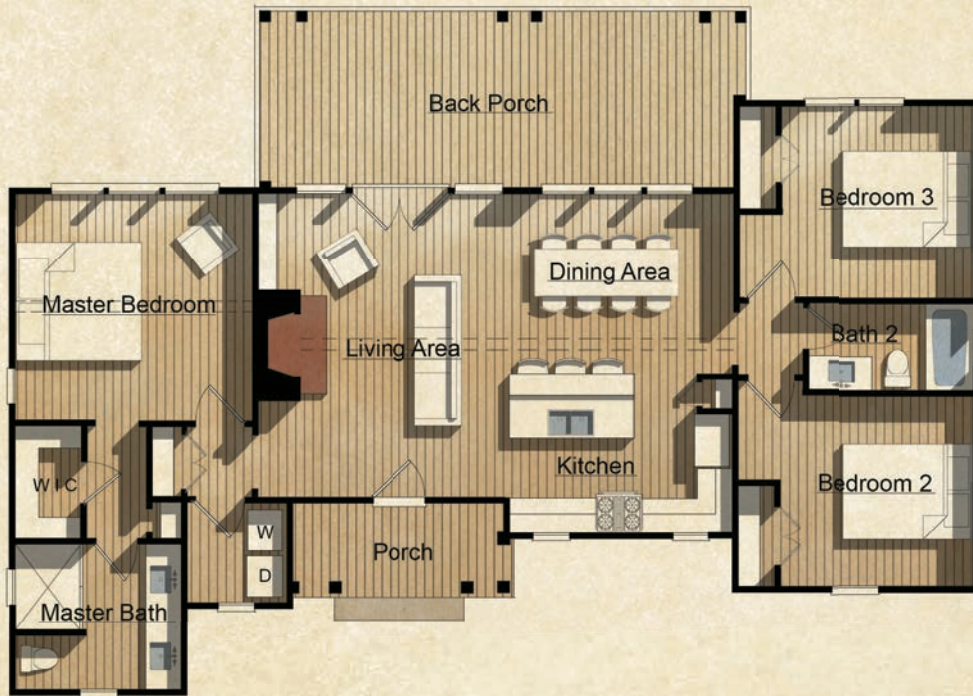


Street Side Elevation

3 bedroom Plan | Total square feet - 1,641 | Conditioned sq. ft. - 1,302

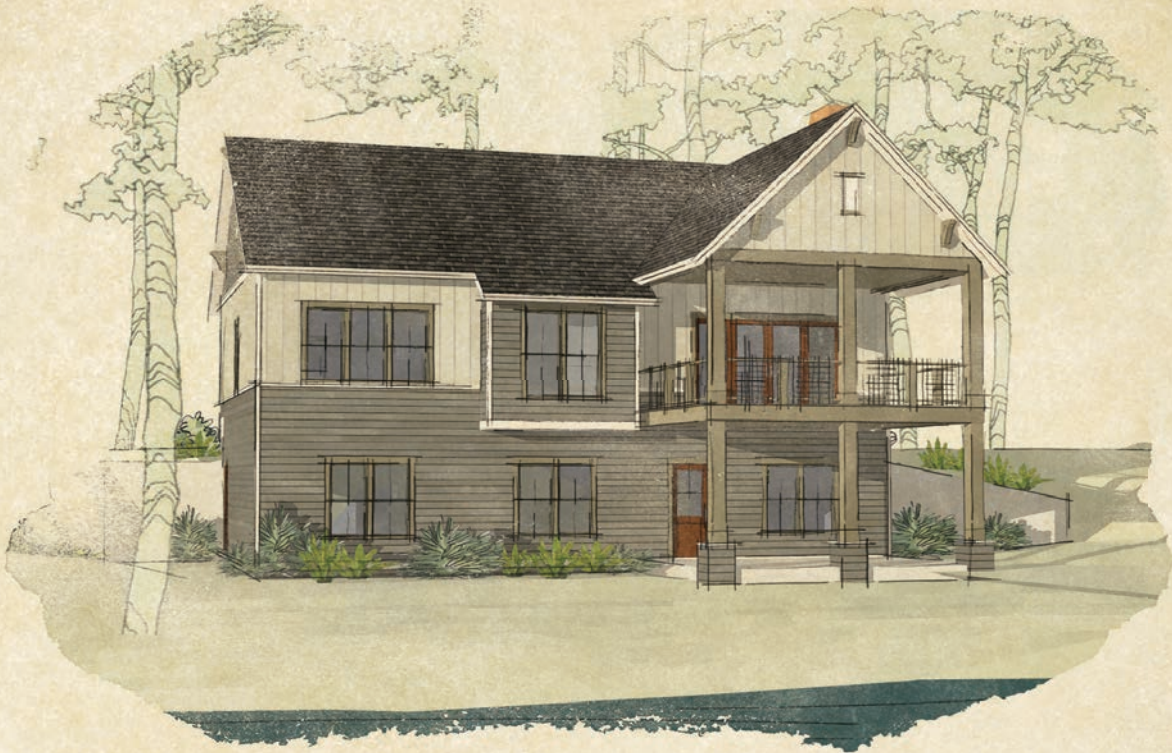
4 bedroom Plan | 1,865 | Conditioned sq. ft. - 1,526 | WhiteOakLandingLM.com

WHITE
OAK
LANDING



WHITE OAK

LANDING



Lakeside Elevation

The Optimist

DESIGNER: *Larry Furlong*

- Walk-out basement cottage
- 4 bedrooms – 3 ½ bath design is perfect for multiple generations
- Open concept design with large vaulted living/family room open to dining and kitchen
- Plan allows for great lake views from virtually every room in house
- Two levels of covered outdoor porch
- Easy walk out to lake from terrace level via porch or lake prep room
- Low maintenance landscape
- Seawall, pier and waterfront features included



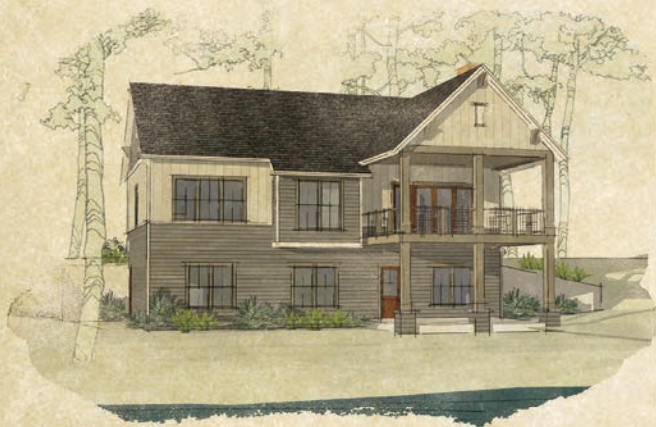
Street Side Elevation

Total square feet - 2,551 | Conditioned sq. ft. - 2,068 | WhiteOakLandingLM.com

WHITE
OAK
LANDING



Main Level



Terrace Level



WHITE OAK



LANDING



Lakeside Elevation

The Firefly

DESIGNER: *Mitch Ginn*

- Great views from every room on Main Level
- Open design with vaulted ceiling in foyer through living room
- Vaulted ceiling in covered outdoor living on main level
- Oversized rec room on terrace level – perfect for entertaining
- Wet bar on terrace level
- Covered patio on terrace level – perfect for outdoor cooking
- Two full bedroom suites with bathrooms on terrace level
- Overflow bunk room and/or storage space

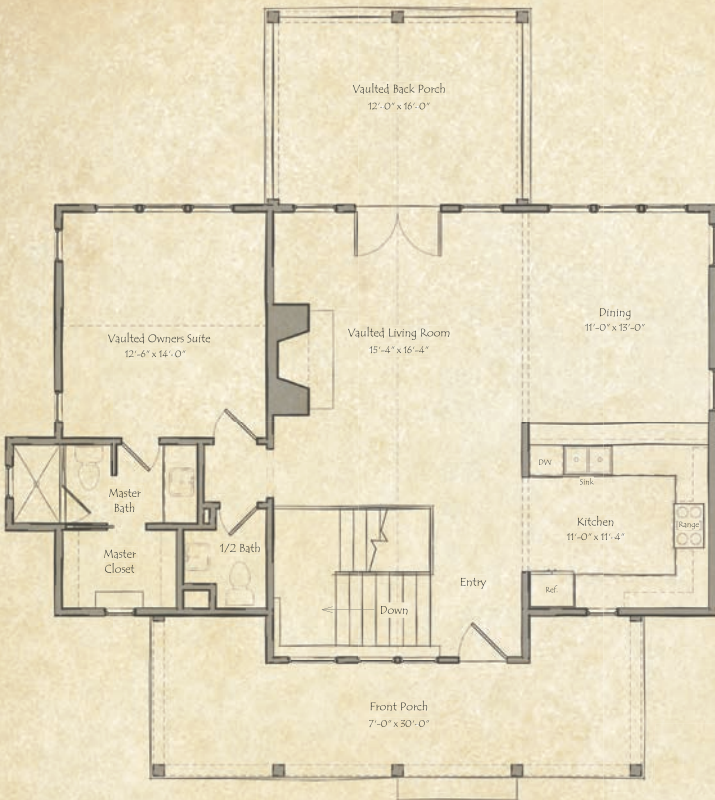


Street Side Elevation

Total square feet - 2,778 | Conditioned sq. ft. - 2,139 | WhiteOakLandingLM.com

WHITE OAK

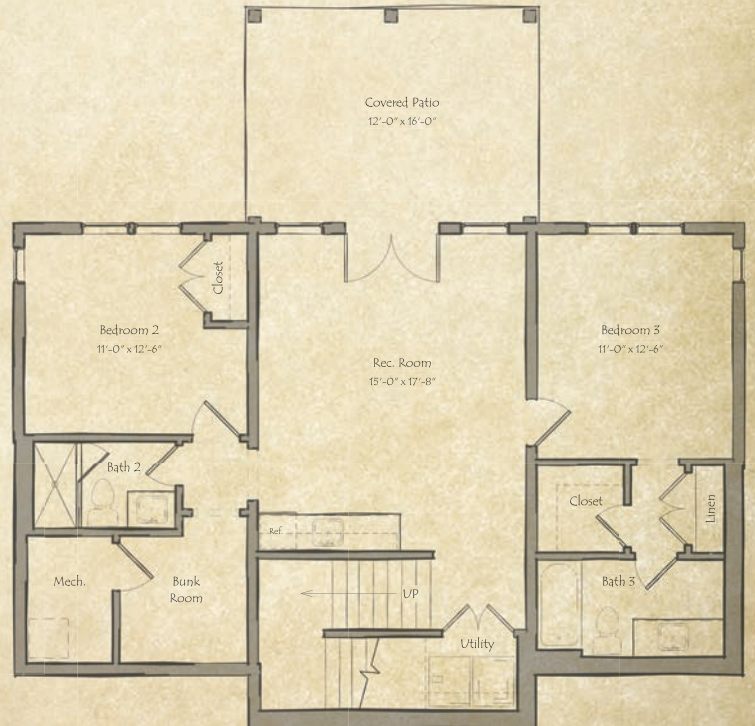
LANDING



Main Level

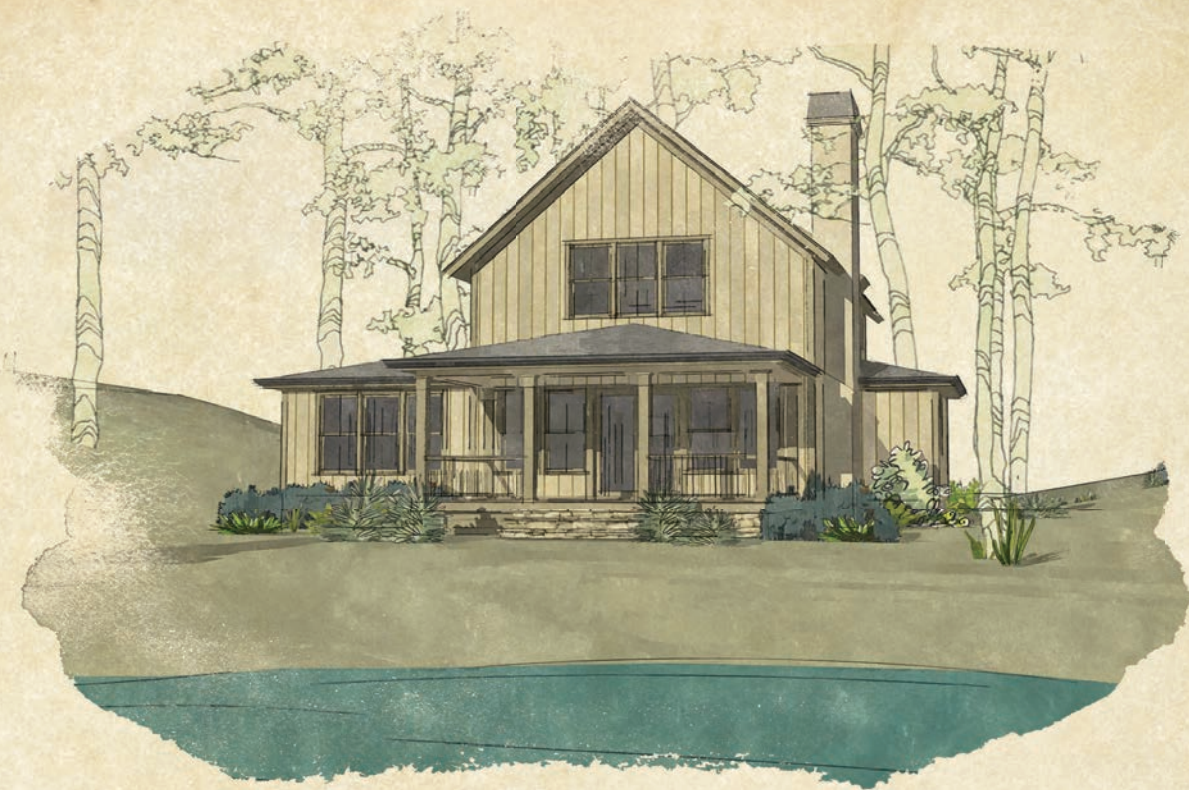


Terrace Level



WHITE OAK

LANDING



Lakeside Elevation

Catalina

DESIGNER: *Mitch Ginn*

- Beds: 4
- Baths: 3.5
- Open kitchen-dining-living space
- Owner's Suite on main level with 3 bedrooms on upper level
- Covered porch with walkout to lake on main level
- Game/Study loft on upper level

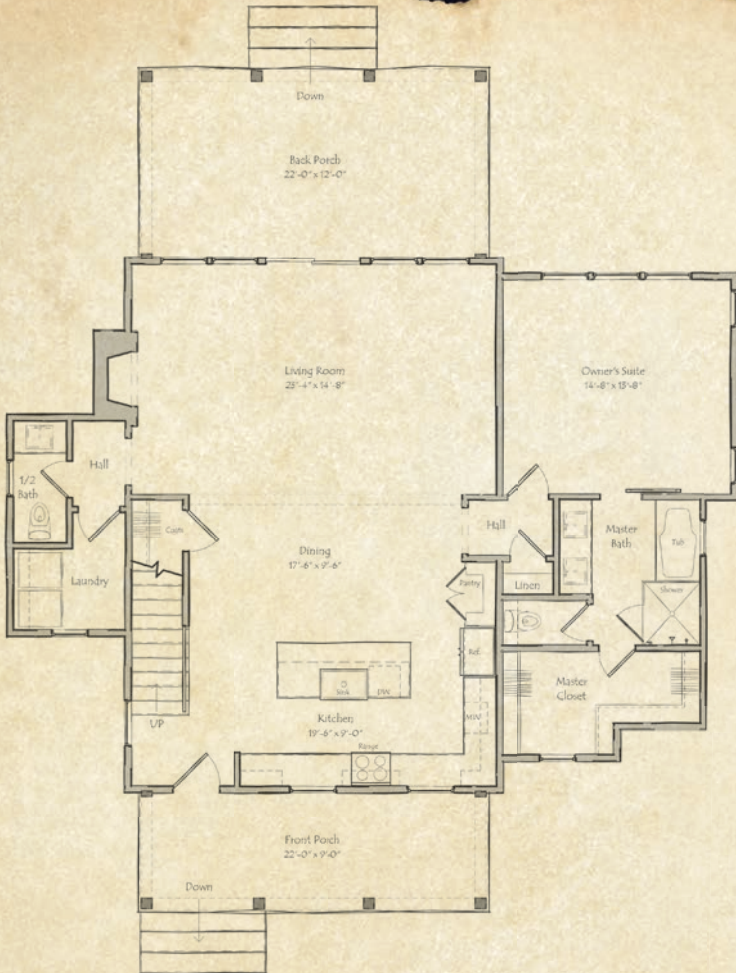


Street Side Elevation

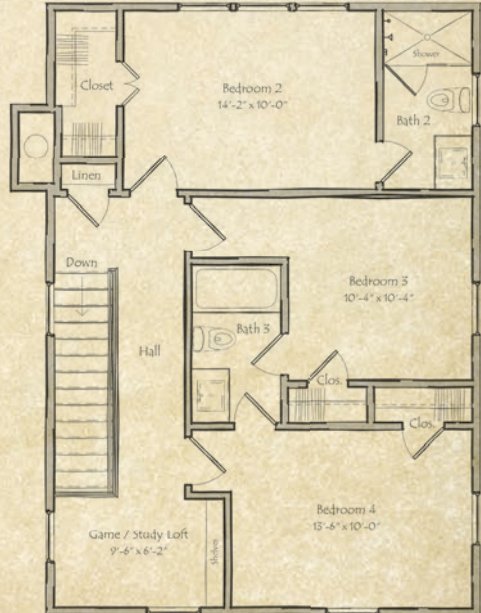
Total sq. ft. - 2,582 | Conditioned sq. ft. - 2,154 | Porches sq. ft. - 428 | WhiteOakLandingLM.com

WHITE OAK

LANDING



Main Level

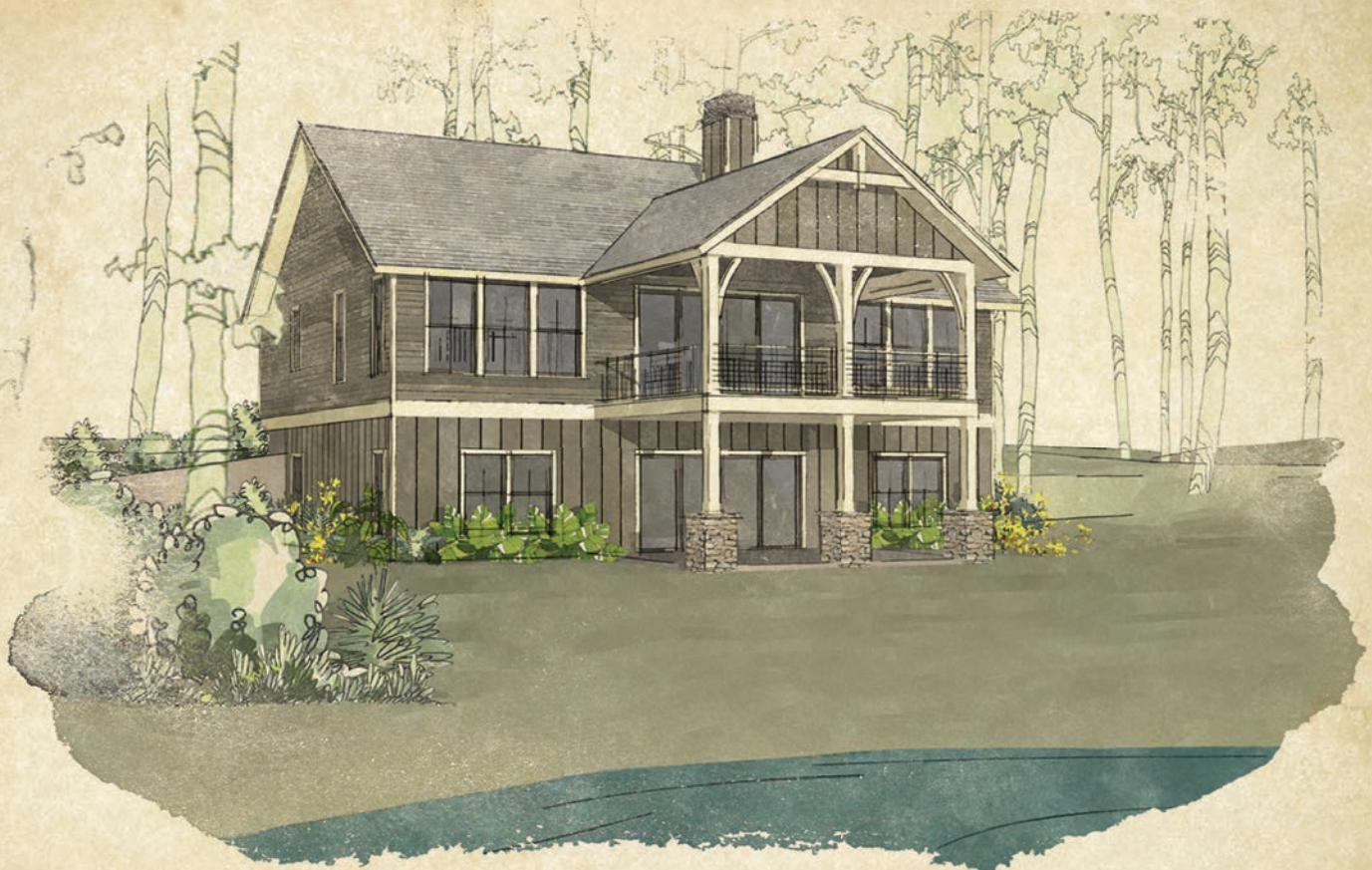


Terrace Level

WHITE OAK









LANDING



Lakeside Elevation

Contender

DESIGNER: *Mitch Ginn*

-  Beds: 5
-  Baths: 3.5
-  Open kitchen-dining-living floorplan
-  Primary suite on main level with four bedrooms and rec room on lake level
-  Covered porch on main level
-  Easy walkout to lake on lower level

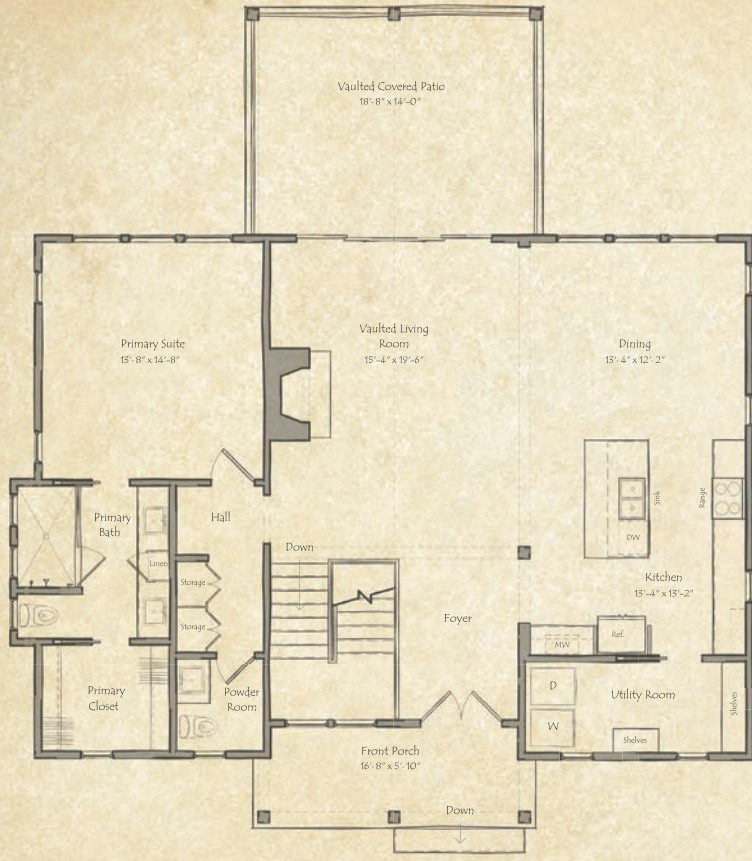


Street Side Elevation

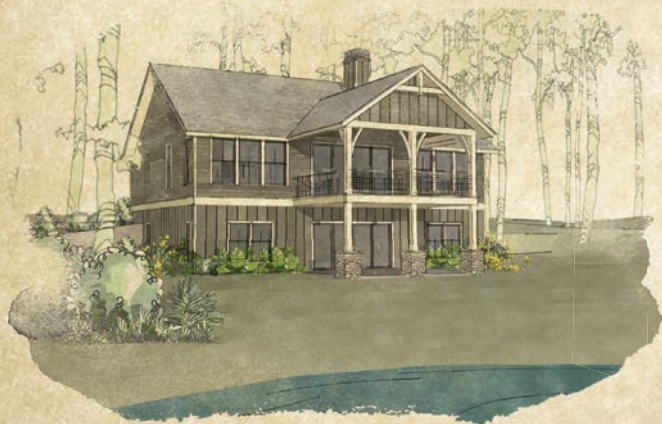
Total sq. ft. - 3,372 | Conditioned sq. ft. - 2,762 | Porches sq. ft. - 610 | WhiteOakLandingLM.com

WHITE OAK

LANDING



Main Level



Lake Level

WHITE OAK

LANDING



Lakeside Elevation

Shellcracker xl

DESIGNER: Mitch Ginn

- 🌿 Beds: 4
- 🌿 Baths: 4
- 🌿 Open kitchen-dining-living floorplan
- 🌿 Primary suite and guest suite on main level
- 🌿 Two additional guest bedrooms on lake level
- 🌿 Covered porch on main level
- 🌿 Easy walkout to lake on lower level
- 🌿 Bar and rec room on lake level

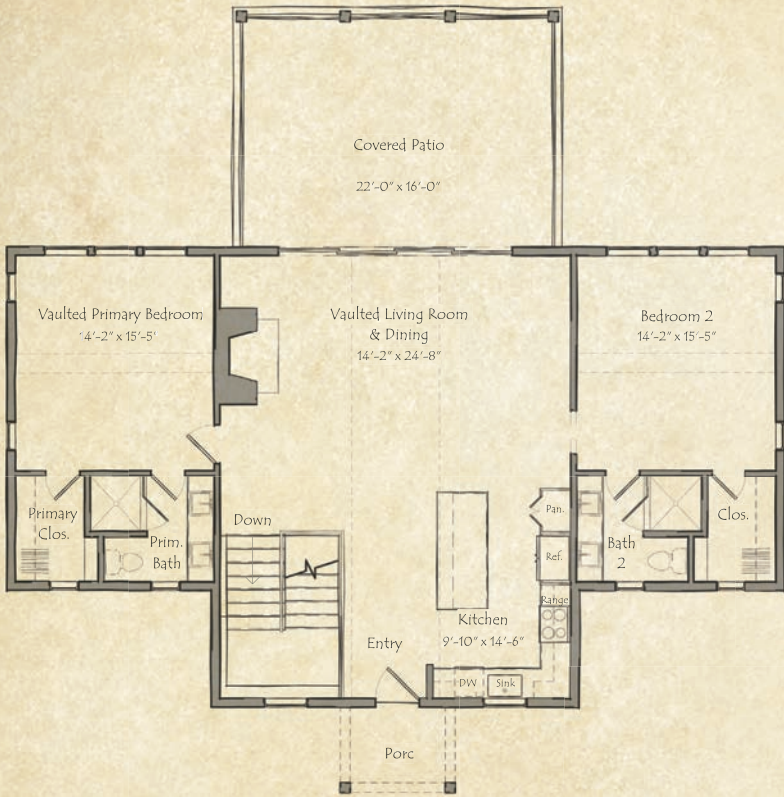


Street Side Elevation

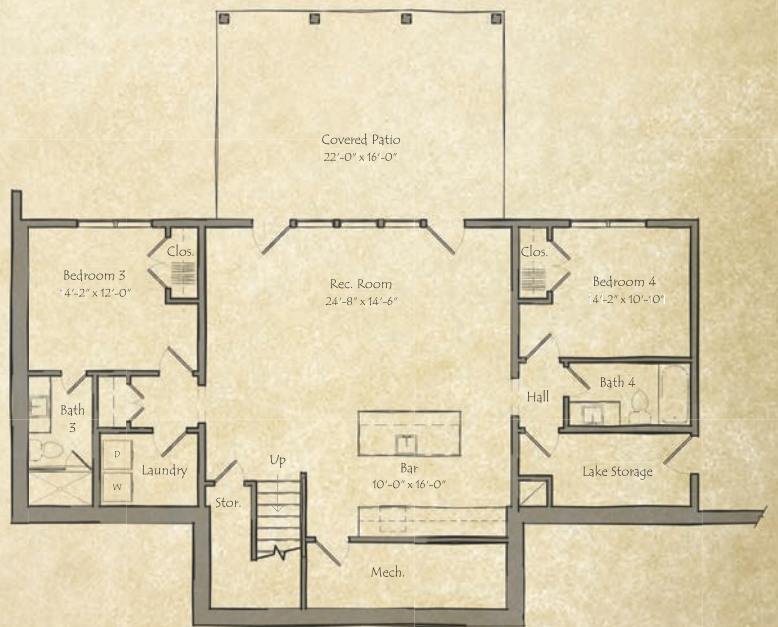
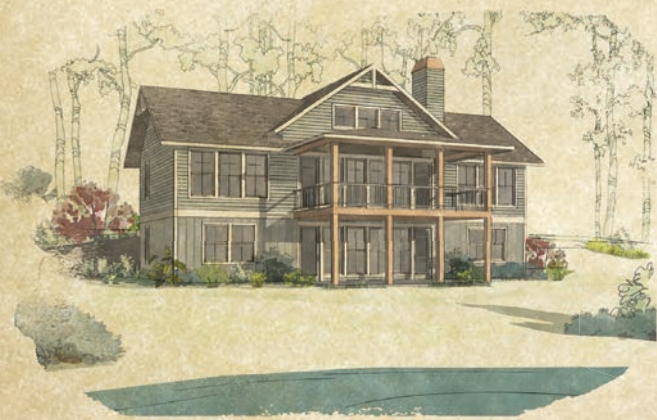
Total sq. ft. - 3,596 | Conditioned sq. ft. - 2,846 | Porches sq. ft. - 750 | WhiteOakLandingLM.com

WHITE OAK

LANDING



Main Level



Lake Level